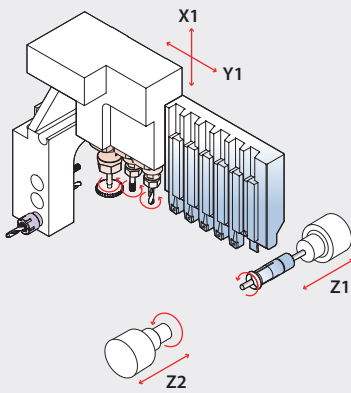


XP12/16S

Compact, in-budget 4-axis model for max. dia. 12/16mm

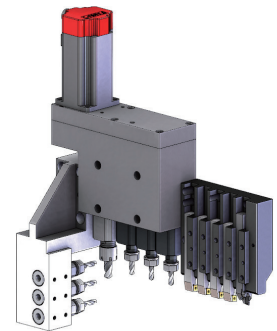


Model	XP12S	XP16S
NC	Hanwha Fanuc-i	
Max. machining diameter (mm)	Ø12	Ø16
Z1 Stroke (mm)	140	
Main spindle	Speed (rpm)	12,000
	Motor (kW)	2.2/5.5
OD tool	6 (□12mm)	
Front tool	3 (ER11, Ø20)	
Cross drill	No. of tools	3 (ER11 x 2, ER16 x 1)
	Speed (rpm)	6,000
	Motor (kW)	0.5
Sub spindle	Speed (rpm)	8,000
	Motor (kW)	0.55/1.1
Machine size (L x W x H) (mm)	1,650 x 1,090 x 1,640	
Weight (kg)	1,800	
Power consumption (Cable size)	3.9kVA, 3.2kW (VCTF 10SQ x 4C)	
Air flow rate (Liter/Min)	120 ~ 150	

OPTION TOOLING

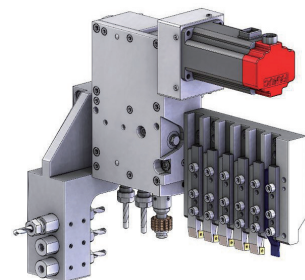
Cross unit 4

- OD 5 (□12)
- Cross 4 (ER16 x 1, ER11 x 3)
- Front 3 (ER11)



Gear hobbing unit

- Maker : Pibomulti
- Angle : -2° ~ 2°



Dimension

